

F

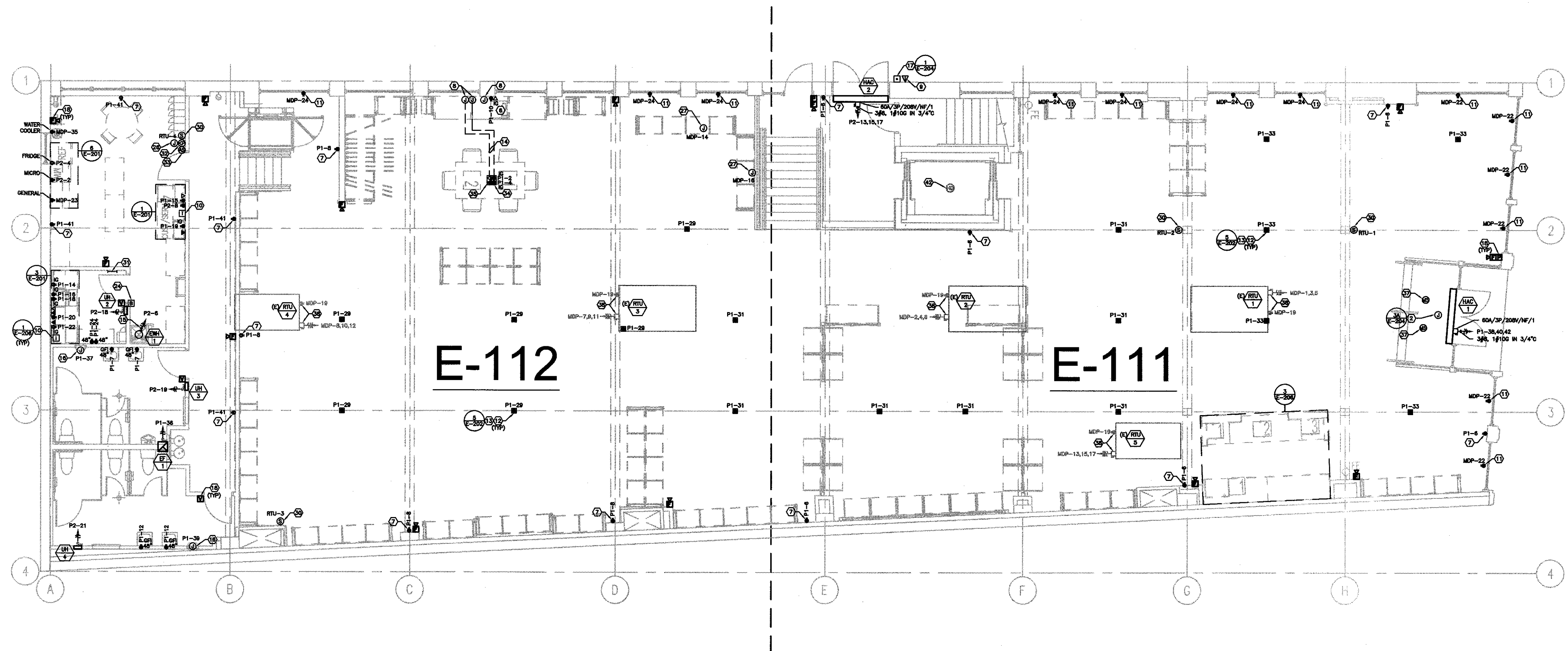
E

D

C

B

A

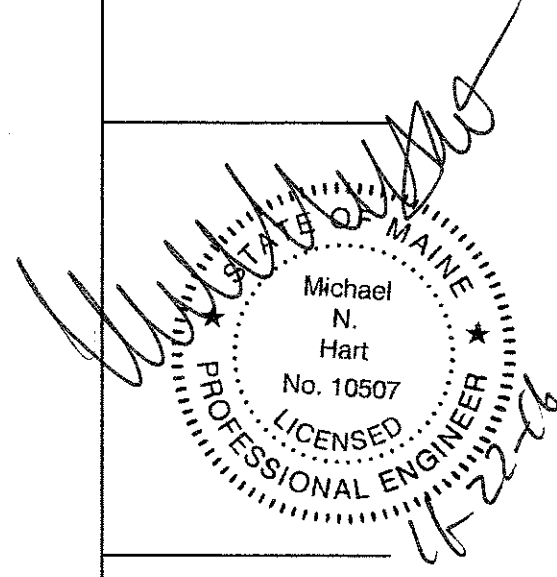


OWNER:  
**WILLIAMS-SONOMA, INC.**  
 3250 Van Ness Avenue  
 San Francisco, CA 94109  
 T 415 616 8602  
 F 415 439 8164  
 www.williams-sonoma.com



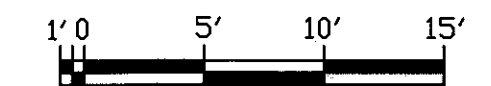
EEA Consulting Engineers  
 6615 Vaughn Ranch Road, Suite 200  
 Austin, Texas 78730-2314 USA  
 512.744.4400 main 512.744.4444 fax  
 www.eeac.com

State of Registration MAINE  
 Firm Registration No. N/A  
 EEA Project No. 20166538



**west elm**  
 Downtown Portland  
 164 Middle Street  
 Portland, ME 04101  
 PROJECT #006-160335.00

ISSUED / REVISED	DATE
PRELIMINARY SET	09/08/16
LL COORDINATION SET	11/08/16
LL/PERMIT SET	11/21/16



SCALE: 1/8" = 1'-0" @ FULL SIZE



**OVERALL FIRST FLOOR POWER PLAN**

**OVERALL FIRST FLOOR POWER PLAN**

**E-110**